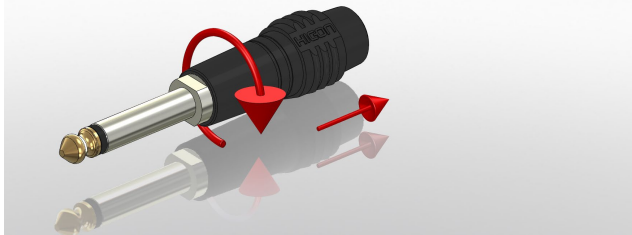


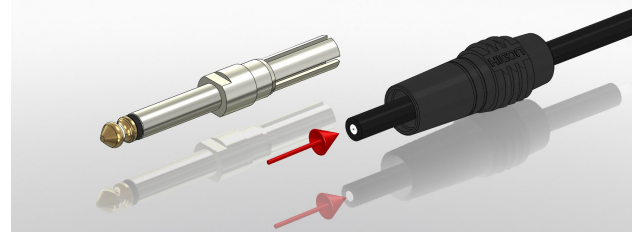
# Montageanleitung

HiCon Tricone Monoklinke 6,3mm Selbstbau  
Art.Nr.: HI-J63TC-SM

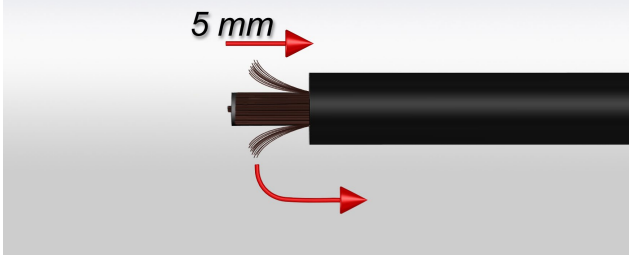
STEP: 1



STEP: 2



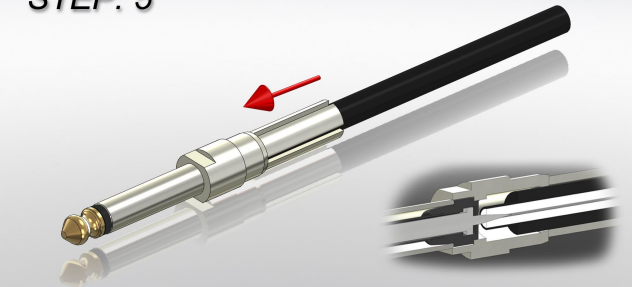
STEP: 3



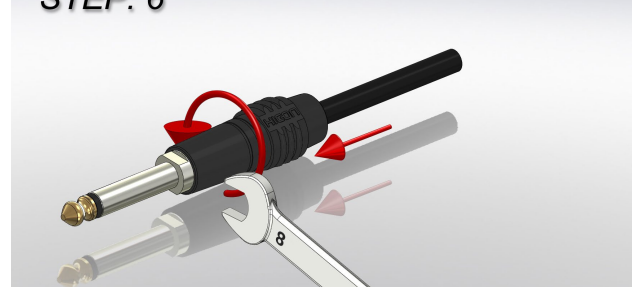
STEP: 4



STEP: 5



STEP: 6



**SOMMER**  **CABLE**

Humboldtstraße 32-36  
75334 Straubenhardt / Germany  
Tel.: +49 (0)7082-49133-0  
Fax: +49 (0)7082-49133-11  
E-Mail: [info@sommercable.com](mailto:info@sommercable.com)